

# OAKVIEW SUBDIVISION

LYING IN SECTION 1, TOWNSHIP 40 SOUTH,  
RANGE 38 EAST, MARTIN COUNTY, FLORIDA

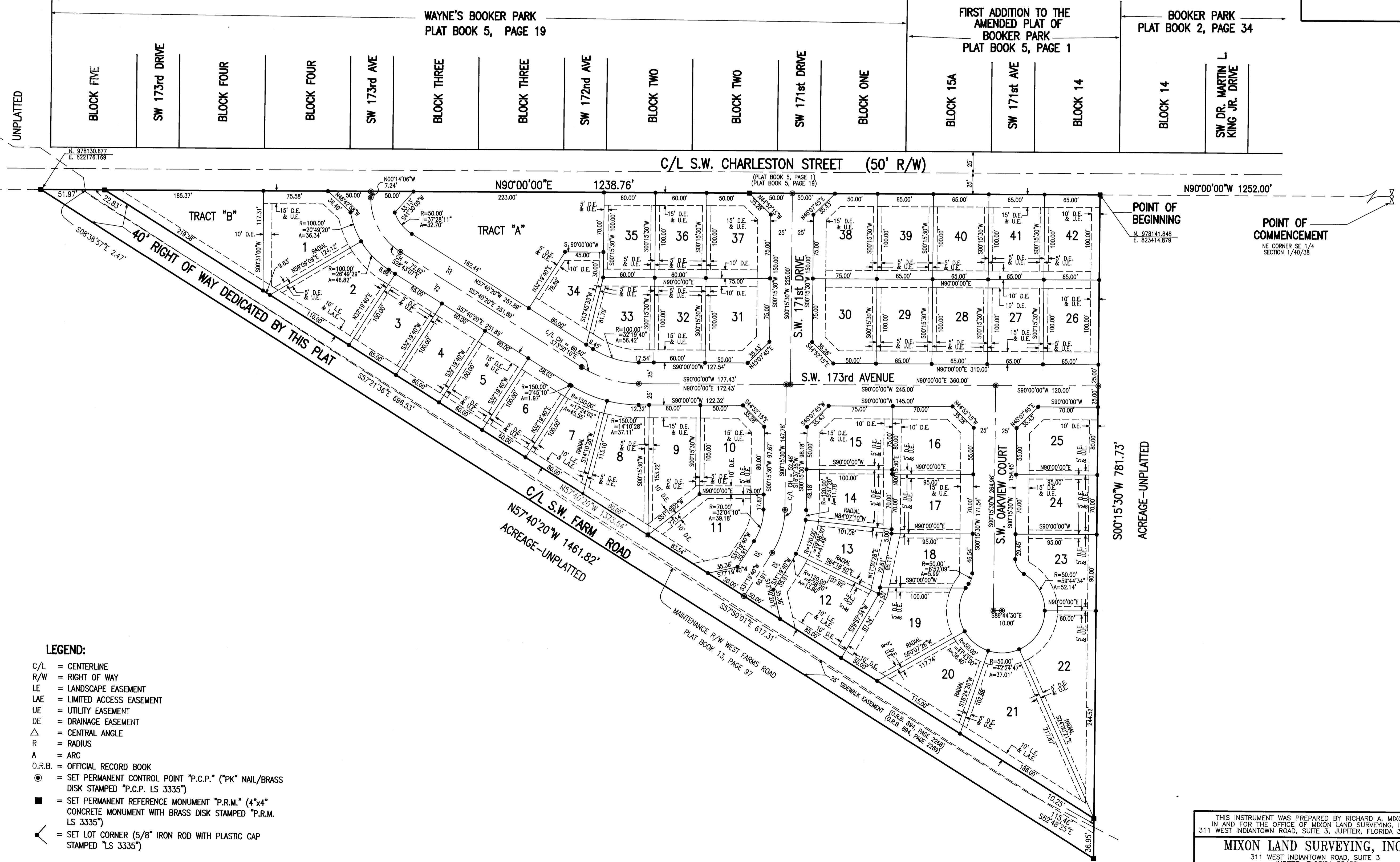
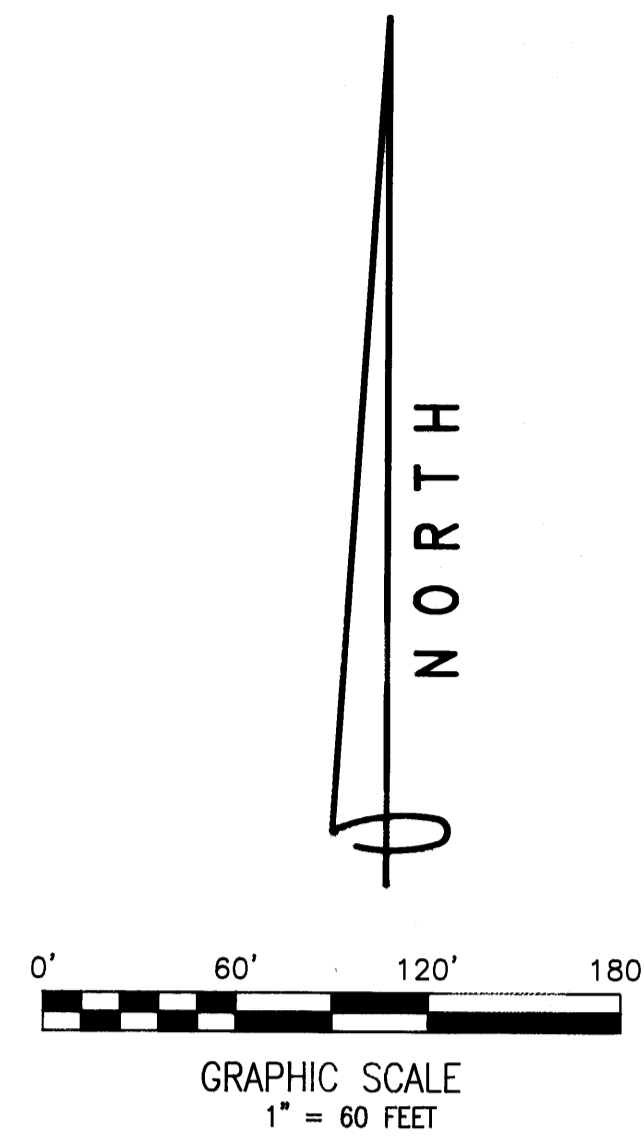
APRIL 2002

SHEET 2 OF 2

I, MARSHA EWING, CLERK OF THE CIRCUIT COURT OF MARTIN COUNTY, FLORIDA, DO HEREBY CERTIFY THAT THIS PLAT WAS FILED FOR RECORD IN PLAT BOOK 15, PAGE 36, MARTIN COUNTY RECORDS THIS 19 DAY OF August, 2002.

Marsha Ewing  
MARSHA EWING, CLERK OF CIRCUIT COURT OF MARTIN COUNTY, FLORIDA

FILE NO. 1593523  
BY: *Annex Copus*  
DEPUTY CLERK  
CIRCUIT COURT SEAL



- LEGEND:**
- C/L = CENTERLINE
  - R/W = RIGHT OF WAY
  - LE = LANDSCAPE EASEMENT
  - LAE = LIMITED ACCESS EASEMENT
  - UE = UTILITY EASEMENT
  - DE = DRAINAGE EASEMENT
  - △ = CENTRAL ANGLE
  - R = RADIUS
  - A = ARC
  - O.R.B. = OFFICIAL RECORD BOOK
  - = SET PERMANENT CONTROL POINT "P.C.P." ("PK" NAIL/BRASS DISK STAMPED "P.C.P. LS 3335")
  - = SET PERMANENT REFERENCE MONUMENT "P.R.M." (4"x4" CONCRETE MONUMENT WITH BRASS DISK STAMPED "P.R.M. LS 3335")
  - ◁ = SET LOT CORNER (5/8" IRON ROD WITH PLASTIC CAP STAMPED "LS 3335")

THIS INSTRUMENT WAS PREPARED BY RICHARD A. MIXON, IN AND FOR THE OFFICE OF MIXON LAND SURVEYING, INC. 311 WEST INDIANTOWN ROAD, SUITE 3, JUPITER, FLORIDA 33458

**MIXON LAND SURVEYING, INC.**  
311 WEST INDIANTOWN ROAD, SUITE 3  
JUPITER, FLORIDA 33458  
(561) 747-6046  
CERTIFICATE NO. LS 4199

PLAT OF  
**OAKVIEW SUBDIVISION**

JOB NO. 98-001 CADD FILE 98-001P DATE 01/00/02 SHEET 2 OF 2